

## THE BASIC SOLAR DOMESTIC WATER HEATER BY RADIANTEC COMPANY

*What would you attempt to do if you knew that you could not fail? - Thoreau*



**Introduction** – The “**Radiantec Basic Solar Domestic Water Heater**” is a pre engineered “packaged” residential solar water heater that will provide abundant quantities of domestic hot water to meet the needs of a typical family.

The Radiantec Basic Solar Domestic Water Heater can serve as a point of departure for more versatile solar energy systems. Useful supplements such as radiant underfloor heating, solar-assisted gardening, snow melting, pool heating and passive cooling applications can be added to the basic system either initially or in the future. For clarity, however, this manual refers only to the basic water heating system. The reader is encouraged to consult with the Radiantec Company for appendices and other information about the supplemental uses.



**Owner's Manual** – The Owner's Manual for the Basic Radiantec Solar Domestic Water Heater contains important information and is an essential part of this installation manual.

**Description and Operation** – Please refer to the Owner's Manual for a detailed description of the system and its operation.

**Code Compliance** - In all cases, it is important to investigate and comply with applicable building codes. Radiantec systems comply with the major national and international codes, but local codes and interpretations can vary. It is the responsibility of the installer to establish code compliance. Do not hesitate to ask your Radiantec technician for assistance with local codes.

**Installer Qualifications** - Installation of a solar heating system from Radiantec Company can be performed by a “reasonably competent handyman”. Nevertheless, the overall skills and the tools that a professional contractor can bring to the project would certainly be beneficial. The basic skills of carpentry, pipefitting, roofing, and electrical work will be needed, but these skills need not be at a high technical level. This work will involve connections to the potable water supply. In many jurisdictions the use of a licensed professional plumber will be required for this part of the work. In some jurisdictions, a licensed insured contractor is required. A certified solar installer may be required in order to qualify for certain subsidies and tax credits.

Prior experience with solar heating installation is not essential. The installation of a solar heating system is a series of sub steps. A person who has fitted copper tubing together, or who has wired a simple control, or who has attached something to the roof without a leak may be well qualified to do solar heating work even if he or she has never done it before. Worker attributes such as attention to detail, a willingness to read the manual, the selection and use of proper tools and a commitment to quality work are important. Most building contractors or professional trades people will find this to be just another project.

**Disclaimers** - This manual provides *general information*, but every project is a little different. The application of this general information to any specific project requires care, diligence and the consideration of all relevant factors. In particular, it is important to consult and comply with any applicable codes.

This manual provides *design assistance*, which is not to be confused with an actual design. A design is a professional service that considers all relevant factors. It would involve a plan review, a review of every applicable code, several site visits, a contract and a fee. None of these elements are offered or compensated for in this “general information”. Accordingly, the Radiantec Company can not assume liability for any consequences that might arise from the application of this general information or design assistance to any particular project and does not make any representation as to the completeness of the information offered.

**Certification** - The solar energy system described by this manual, when properly installed and maintained, meets the minimum standards established by the SRCC (Solar Rating and Certification Corporation). This certification does not imply endorsement or warranty of this product by SRCC.

**Installation Packages** - We strongly recommend the use of an installation package that is pre-assembled, pre-engineered, and pre-tested. The right components are assembled using the right tools by skilled technicians in the shop under ideal conditions, and then fully tested. The planned arrangement helps produce an attractive and professional looking job.

**Sub Steps** - The work of installing the **Radiantec Basic Solar Domestic Water Heater** can be viewed as a series of sub-steps that include:

1. **Mounting the solar collectors**
2. **Mounting the “Solar Mechanical Package” and “Supplement Manifold” (if used)**
3. **Placing the solar hot water storage tank**
4. **Connecting the tubing**
5. **Installing the controls**
6. **System start up**
7. **Insulating the system**

# INSTALL THE SOLAR COLLECTORS

## Orientation

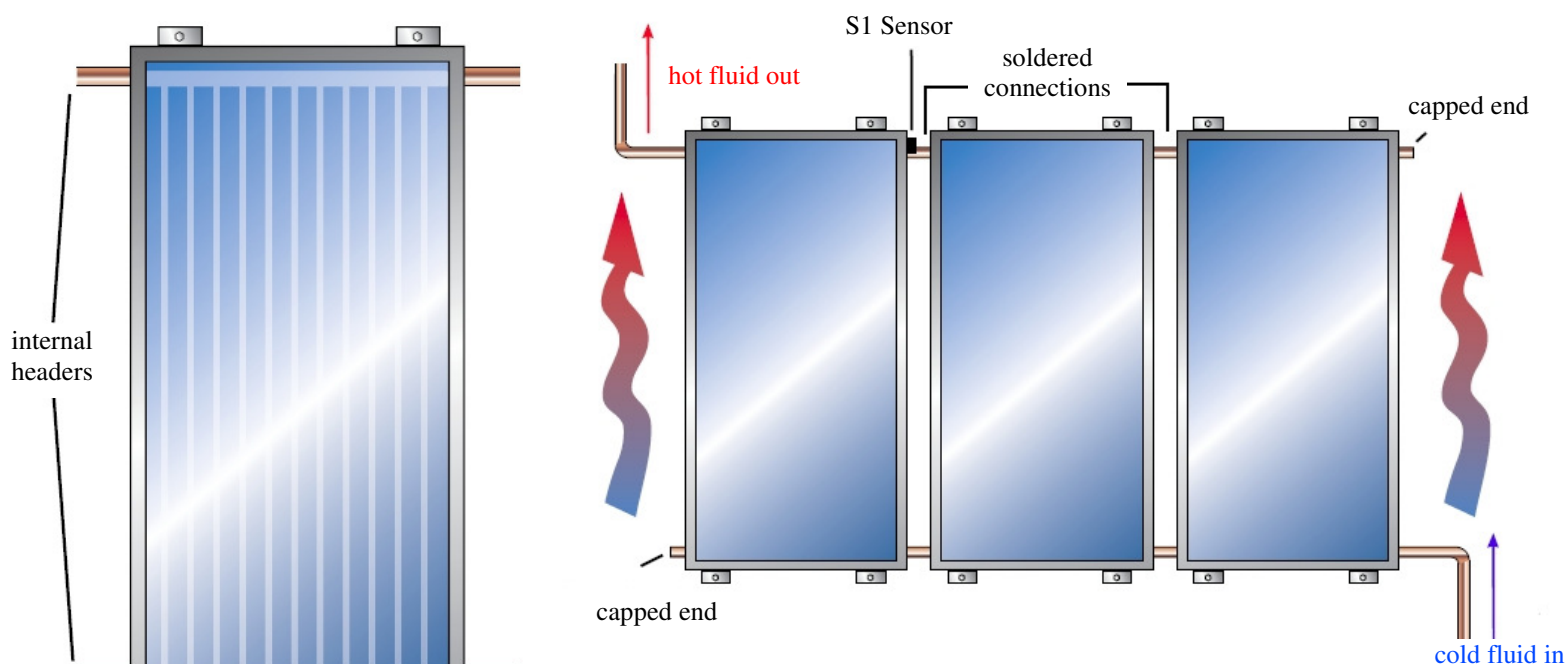
Solar collectors are usually placed facing due South and at a tilt from the horizontal equal to the latitude + 10 degrees for balanced solar energy reception throughout the year. It is important to understand that significant deviations from this so called “ideal” may be completely acceptable. Deviations in direction of up to 45 degrees may have less than 10% reduction in overall performance. This deviation is not enough to justify the cost and heat loss of an unsightly mounting rack. Deviations to the east will favor morning performance and deviations to the west will favor afternoon performance. Deviations in tilt can also be acceptable. A lower angle will favor summertime performance while a higher angle will favor winter performance. A tilt angle of 45 degrees or more will usually shed snow automatically.

**Note that the compass does not point to due South.** It is necessary to **add** a “compass correction factor” of up to 17 degrees on the East coast of the United States and **subtract** up to 15 degrees on the West coast to the compass reading to find “True” South. To get the correction factor for your location, you can consult an “isogonic” chart, ask Radiantec Company or ask a local aircraft pilot.

Of course, the location and orientation of the collector should be such that there will be no excessive shading. The panels should be in full sun for the middle six hours of the day in each month.

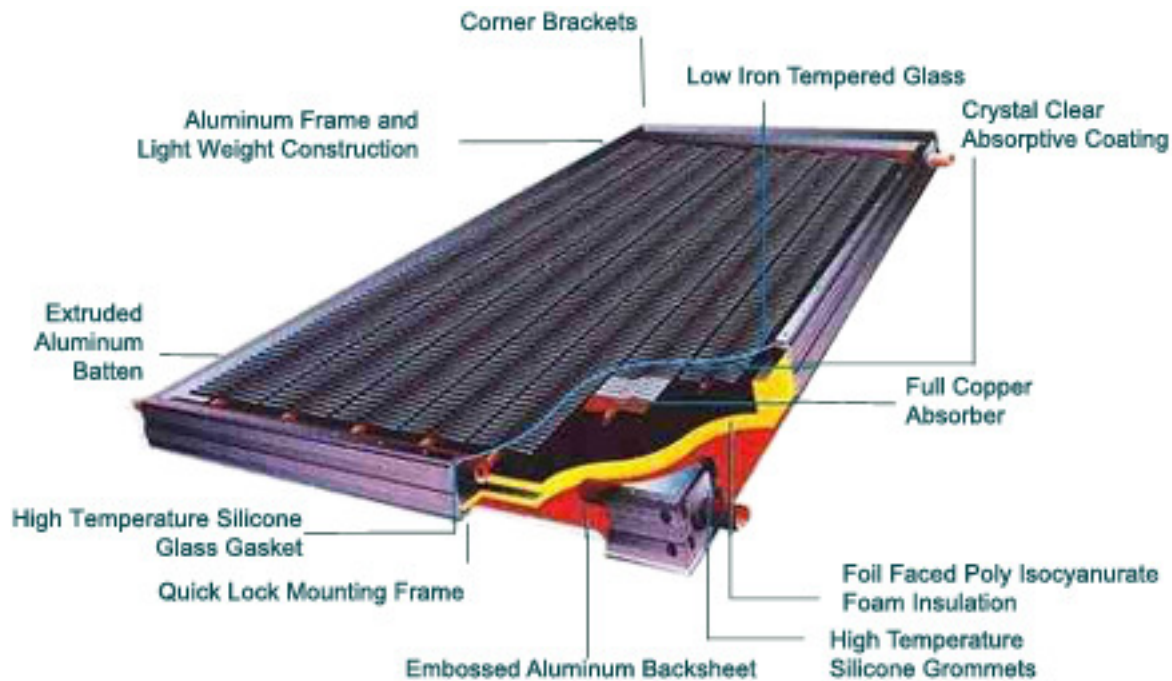
## THE SOLAR COLLECTOR

The solar collector is a shallow aluminum box with a tempered glass cover sheet. Typical nominal dimensions are 4 ft x 8 ft x 4 in and the weight is 113 pounds when empty and 123 pounds when filled with fluid. Collectors are oriented towards the sun and when the solar energy enters the collectors it strikes the black absorber plates and is turned into heat which is carried away by copper tubes. A water-based antifreeze solution flows into the bottom of the collector on one side and comes out the top on the other side after being heated by the sun.



Three solar collectors are connected to each other so that they form one large solar collector array. The collectors have "internal headers" which go across the top and bottom and have outlets on the sides. When the collectors are connected, the headers of each solar collector are soldered to the headers of the others.

## HOW A SOLAR COLLECTOR IS CONSTRUCTED



## SAFETY

- 1. Hard hats** - The worksite is a hard hat area while work is being done on the roof. There are a number of hazards, and tools or other materials could be dropped accidentally. Rope off the area beneath the roof and consider posting a sign saying that the area is a hard hat area. Keep onlookers at a safe distance.
- 2. Do not work underneath an unsecured solar panel.**
- 3. Gloves** - Solar panels get hot when bright sunlight is shining upon them and nothing is taking away the heat (stagnation). Wear gloves. Avoid working with solar panels in the middle of the day. Cover the panels with part of the shipping carton or with a tarpaulin.
- 4. Sunglasses** - Wear sunglasses when working with solar panels on sunny days. The glare reflecting from solar panels in bright light is uncomfortable and distracting to the point of causing a safety problem. Workmen who do not wear sunglasses are likely to go home early with a headache.
- 5. Sign Crane** - It can be economical to rent a crane and operator from a local sign contractor. Use of a crane allows workmen to stay off of the roofing material. A crane could mount all solar panels for a typical residence in less than one hour.
- 6. Scaffold** - Erect a proper and safe scaffold. It is safer and will save many trips up and down the ladder.
- 7. Tool Belt** - Use a proper tool belt — it will also save many trips up and down and leave your hands free to hold onto the ladder or scaffold. Do not carry any extra tools: If you drop a screwdriver with a tempered bit onto a solar collector with tempered glass, the glass could break immediately or it could break up to a week later.
- 8. Safety Harness** - Use a safety harness when on the roof.



## PLANNING

1. Plan and locate the position of the panels with chalk lines so that their appearance can be visualized. Solar panels are generally more attractive if they are placed at or below the midline of the roof area.
2. The location of the panels should be approved before the work begins. Take a sheet of plywood up to the roof if it will help to visualize the finished work.
3. In new construction, keep in mind that work may have to be done behind the roof to prepare a solid support for the solar collector legs. Do not put the collectors in a place where this work is inaccessible.
4. Coordinate with the General Contractor. Make sure that he or she understands that solar panels will be placed upon the roof and that the roof must be built to the proper dimensions. Building insulation should not be installed in the solar work area until the solar work is roughed in and pressure tested.
5. Snap another chalk line in the place where holes will be drilled for the collector mounts. Hold the line tight enough that it does not dip in the middle.
6. Please note that penetrations of the building through which piping or wiring is passed should not reduce or impair the function of the enclosure. Penetrations through walls or other surfaces must not allow intrusion by insects and/or vermin. Required roof penetrations must be made in accordance with applicable codes and also by practices recommended by the National Roofing Contractors Association. Finally, penetrations through fire-rated assemblies must not reduce the building's fire resistance required by local codes, ordinances and applicable standards.
7. Start in the middle of the roof and work outward. That way, you can be certain that the work will be centered on the roof.
8. Measure twice before drilling holes in important locations.
9. Anticipate and plan for everything that needs to be done before starting work. Read the entire manual before starting. In particular, note the following:

- a. **Secure Attachments** - Do not just lag the solar panels to the plywood sheathing; it is not acceptable. The lag bolts must be drilled directly into the rafters, or something else solid. Blocking can be used to transmit the solar collector loads to the rafters and provide something solid to screw the lag bolts into. Mounts provided by Radiantec can slide along the top and bottom edges of the solar collector so that mounts can be installed directly into the rafters.

- b. **Compatible Materials** - Whenever possible, use mounting hardware that is supplied by the solar collector manufacturer. It is essential to avoid the use of different kinds of metals when fastening to the solar collectors. When different kinds of metals are used, the metal that is more stable will corrode the metal that is less stable. Use stainless steel fasteners, which are especially resistant to corrosion, or use components that are all made of the same material.



- c. **Even Flow** - For even flow, the solar fluid will flow into one side of the solar array at the bottom, and come out on the other side at the top (called reverse return). The “C” type fluid return where the fluid comes out on the same side of the collector array that it went in is only acceptable for no more than three solar collectors. Be sure that there is an efficient way to run, support, and insulate the supply and return pipes. Minimize exterior piping as it is inefficient and expensive to insulate.
- d. **Expansion** - Plan for expansion and contraction of the header pipes within the solar panel. Solar collector temperatures could vary between the coldest expected outdoor temperature, and the stagnation temperature of the collector in full sun. This temperature difference could be up to 300 degrees F.
- e. **Sensor Wire** – An 18-gauge thermostat-type wire is needed for the solar collector sensor. It should be positioned at this time and run down to the mechanical room. The sensor will be placed between the last two solar panels at the outlet. Seal the roof penetration with silicone. Use shielded wire if there is a potential for radio interference (police stations, etc.).
- f. **Prepare the Solar Panels for Mounting** - Attach the mounting brackets to the panel. Attach the mounts so that the solar panels are held about 1” off the roof in order to prevent moisture from damaging the roofing materials.
- g. **Bring the Solar Panels to the Roof and Mount** - With planning and proper equipment, it is possible to do this work without stepping on the roof. When the panel is on the roof, you or your contractor will first assemble any plumbing connections that need to be made. Do not solder the connections at this time. Drill a pilot hole for the collector mount with reference to the earlier made chalk line, then insert a screwdriver through the hole in the mount and then into the pilot hole. This will temporarily secure the panel in place and prevent the plumbing connection from becoming undone.

When ready, apply a silicone-based sealant to the pilot hole and put a lag bolt in, but do not tighten it all the way. When the lag bolts are inserted, the silicone sealant will expand under the pressure and fill any cracks or voids where water might leak in. It may be necessary to lift the solar panels a little bit in order to retrieve the lifting sling, if used, or to make the plumbing connections. Tighten the lag bolts completely when this work is done.

The copper connections, top and bottom, may be soldered as each panel is mounted, or they can be done for all panels at the same time if the work will not be delayed too long (not overnight). Solder the connections using standard, no lead solder. Do not use 95/5, or silver solder and do not braze it. This is not necessary and the excess heat will damage seals and insulation within the panel. **The person who does this work should be skilled.**

## STANDARD MOUNTING (AE-MH)

1. The AE-MH (standard) hardware kit allows for flexibility in collector elevation angle and also stands the solar panel off of the roof about 1" for moisture protection. The hardware kit has two components. The "AE clips" slip into a track that runs continuously along the edge of the solar panel frame. The exact position of the "AE clip" can be variable in order to locate a rafter or other solid material, but the two clips should be located within 6-12" from the end of the solar panel. A locking bolt is available to secure the position of the "AE clip".
2. The front AE-Clips are attached to the front "Triangle Roof Mounting Brackets" with 3/8" x 1-3/4" SS bolts as shown in *Figure 5*.
3. If an angle adjustment is not necessary, the rear mounting is the same as for the front. If an angle adjustment is required, the rear AE-Clips are attached to the rear "Triangle Roof Mounting Brackets" via the "Tilt Mounting Struts", using a 3/8" x 1-3/4" SS bolt at the bottom and a 3/8" x 4" SS bolt at the top of each strut.



**Calculate the Length of Mounting Strut Required** - Refer to the Appendix to calculate a strut length that will result in the desired collector elevation angle.

**Pressure Test** - Pressure test your work as you go, particularly with larger solar arrays. That way, if you have a problem, you will know where it is and how to correct it. Do not pressure test with the expansion tank in place.

# THE SOLAR MECHANICAL PACKAGE

**General** - The “Solar Mechanical Package” contains all the components that are needed for the proper functioning of a closed loop, hydronic heating system. It is similar in content and function to a standard boiler system, but there are important differences.

The SMP will contain at a minimum: Fill and drain valves, isolation valves, an air eliminator, an expansion tank, a pressure relief valve, a pump and a one-way check valve.

When the construction of the solar loop is complete, there will be ways to:

- **Fill the system.**
- **Drain the system. (with little or no mess)**
- **Flush the system.**
- **Back flush the system if needed.**
- **Get all of the air out, and keep it out.**
- **Work on nearly anything mechanical without draining the system.**
- **Prevent reverse thermo siphoning at night.**
- **Read the system pressure.**
- **Relieve expansion and contraction of the working fluid.**
- **Mount the pump in its proper location and orientation.**
- **Relieve pressure on the solar panels under abnormal conditions.**
- 

The SMP is designed to address these issues. The components of the SMP are put together and shipped in the proper **arrangement**, and that is important. Of particular importance is the location of the pressure relief valve. **There must be no valve, or combination of valves, which if closed would isolate the pressure relief valve from the solar panels.** Failure to obey this fundamental rule of mechanics could cause expensive damage to the panels or to a heat exchanger and could even cause a safety problem.

**Isolation Valves** - If the solar energy system needs attention in the future, it will probably be in the SMP because this is where most moving parts and threaded fittings are located. Isolation valves are designed into the SMP so that work can be done on the SMP without draining the entire system. Do not add extra valves to the system without making sure that they will not cause problems. If you do add a valve somewhere, label its proper position.

**Mechanical Room** - The SMP should be located in a mechanical room inside the building which will lower the perception of pumping noise (which is minor) and discourage tampering. It will protect against freezing (if it was located in a garage, for example), conserve heating energy and eliminate nuisance heat production during the cooling season.

**Workmanship** - The plumbing work must be careful and professional for many good reasons:

1. An antifreeze solution is less viscous than water, and it will leak in places where water will not.
2. A small leak will not repair itself by corrosion.
3. A water makeup valve is not desirable because it would dilute the antifreeze solution without being noticed and subject the system to expensive freezing damage.



## INSTALLING THE SOLAR MECHANICAL PACKAGE



◀ Remove the SMP from the shipping crate.



◀ Cut the tubing where indicated and attach elbow fittings (not supplied).

Solder the elbow fittings ▶ and attach the pump.



◀ Attach the SMP to the wall and/or hang from the ceiling using supplied threaded rod hangers (3/8" threaded rod available in hardware stores and plumbing supply stores).

Add warning labels to the fill and drain valves and plumb pressure relief valve to a safe place. The warning label should read:

**DANGER – DO NOT OPEN THIS VALVE.  
THE PIPES DO NOT CONTAIN WATER.  
THE SYSTEM CONTAINS AN ANTIFREEZE  
SOLUTION AND MIGHT BE VERY HOT!!**

Locate these valves high and out of the reach of children and limit access to the mechanical area to adults. Attach caps and tighten very snugly with a wrench (more than hand tight) to discourage tampering.

## INSTALL THE SOLAR SUPPLEMENTS MANIFOLD (if used)

The solar supplements manifold is how various supplementary solar applications can be added, such as underfloor radiant heating, long term passive heat storage, solar gardening applications, snow melting, pool heating and other uses for the solar energy.



- Use threaded rod hangers to support the manifold and provide clearance for pipe insulation.

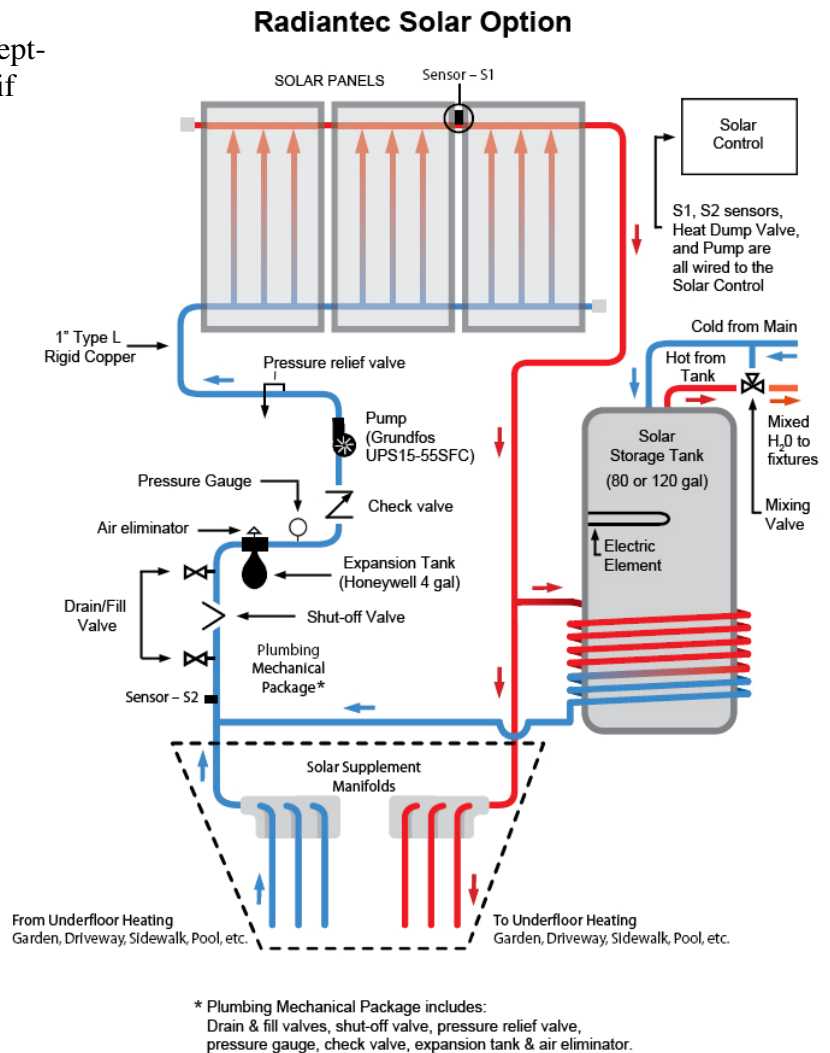
***Note:** Locate this manifold at least 18" below the SMP to prevent excess heat from reaching any plastic tubing attached to this manifold.*

- Remove the pressure testing equipment after testing supplemental uses



## RUN THE TUBING BETWEEN THE SOLAR PANELS AND OTHER COMPONENTS

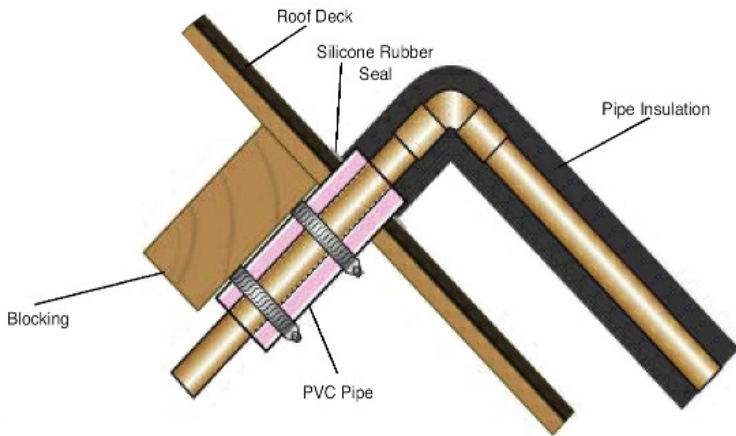
Use ¾" copper tubing, type L. No substitutions are acceptable here. (except that a larger size tubing can be used if future expansion of the system is contemplated).



**Note:** Plan to avoid over heating at plastic fittings. The solar collector antifreeze loop can get very hot if it is only making domestic hot water. Make sure that heat cannot conduct to plastic fittings or other components that are not rated for high heat. The tubing that connects to the solar domestic tank can get very hot. Provide 18 inches of uninsulated vertical separation between the solar tubing and any plastic connections at the supplements manifold.



## Roof Penetration Detail



◀ The roof can be penetrated with this detail or with a boot. Seal with silicone sealant, top and bottom and sides.

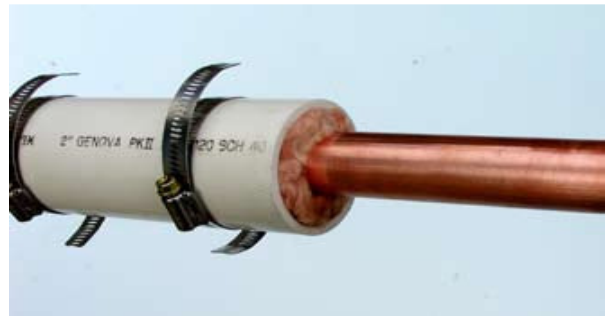
When penetrations are required in structural members to accompany passage of solar components, those modified structural members must comply with local building codes.

The work will be quiet and efficient if the tubing is insulated at the points of attachment first, and then fastened securely to the framework of the structure. Find an 8-10 inch piece of 2" PVC or ABS. Run the tubing in the middle and stuff fiberglass all around it. Compact it quite tightly. Then secure the PVC firmly to a framing member with two stainless steel clamps and screws or nails.

Use the same technique to support tubing on long runs within the building. Hangers must provide adequate support and correct pitch of pipes. Hangers or supports for insulated pipes or components should be designed to avoid compressing or damaging the insulation material.

Do not forget the sensor wires. Attach sensor wires to the outside of the insulation to eliminate thermal degradation (*See diagram in controller section*).

Building materials adjacent to solar components should not be exposed to elevated temperature. The above roof penetration detail along with the insulation of all copper will protect all adjacent building materials.



**Insulation** - Insulate the solar loop for efficiency, sound reduction, safety and avoidance of nuisance heat during the summer. Insulate after pressure testing and after initial startup. Insulation must have at least  $\frac{3}{4}$ " wall thickness and be rated for high temperatures (at least 275 degrees F). Exterior insulation must be resistant to UV radiation and moisture.

**Below Grade** – An insulation box can be made of extruded polystyrene, which is resistant to moisture. The box can be foamed with urethane. Place 12" below grade.

## PRESSURE TEST

The fully assembled work should now be pressure tested at 100 psi. No loss of pressure at all is acceptable; however variations of up to 5 psi can occur from solar energy striking the collectors. Do not connect the expansion tank until after the pressure test. Verify operation of the pressure relief valve at 75 psi.



# ELECTRICAL

## CONTROLLER

The Radiantec SH-08 solar heating controller turns the pump on and off according to the availability of solar energy. Please refer to the "Owner's Manual" for more details about its function. The experienced installer should note that there are important differences between the Radiantec SH-08 and other solar controllers.

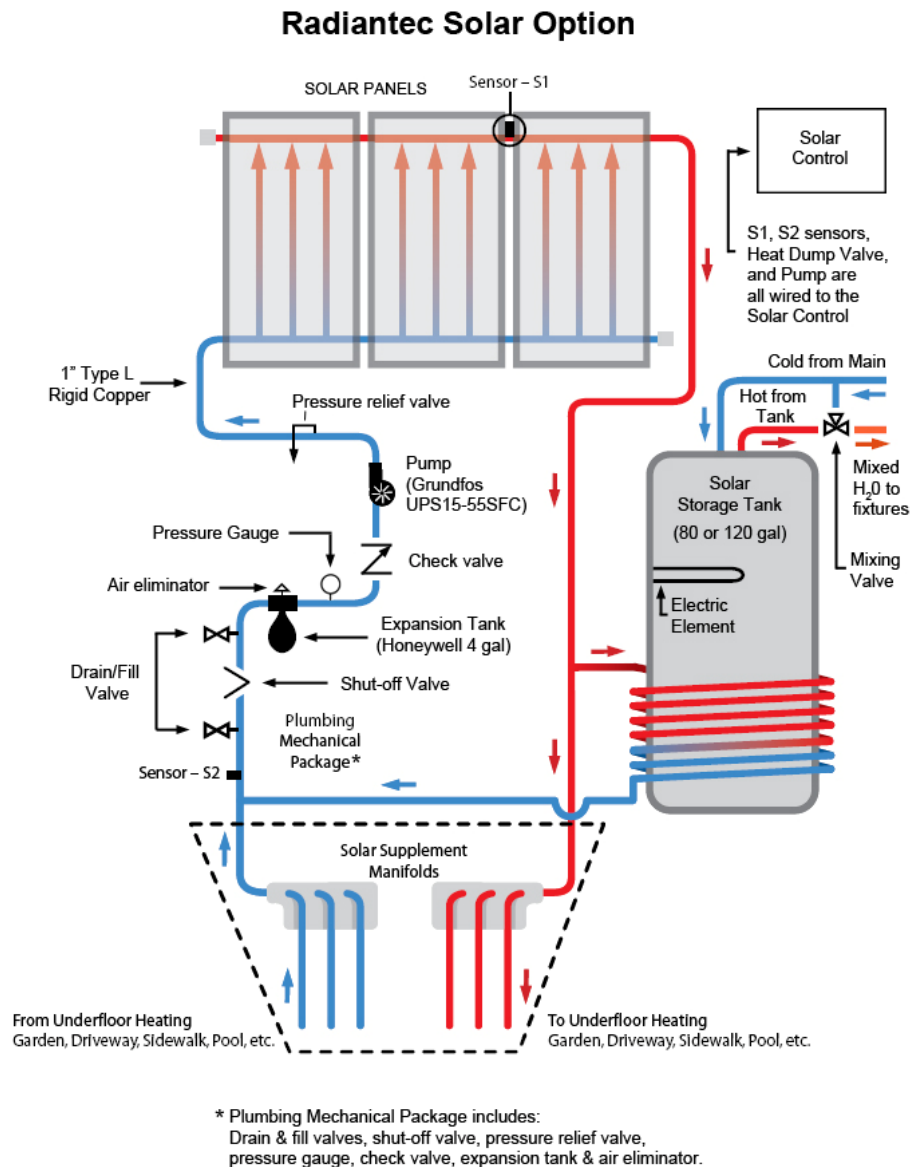
For example, the sensor locations are different.

### Operates the Solar Circulating Pump

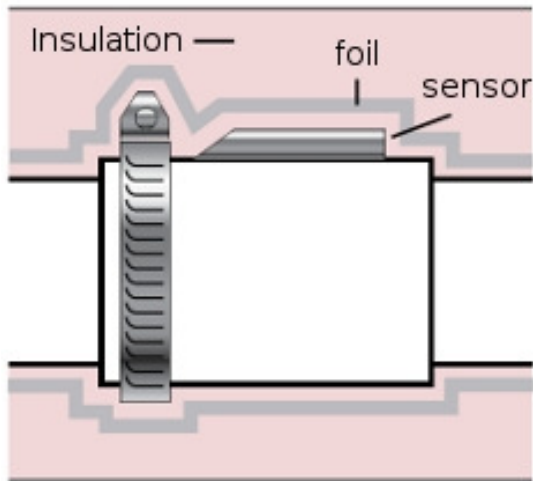
— The SH-08 solar controller sends controlled 110v electrical power to the solar circulating pump so that the heat transfer solution (the antifreeze solution) will circulate from the solar collectors to the domestic water heater heat exchangers and then back to the solar panels to be reheated. There are two electrical temperature sensors (S1 and S2). S1 is placed where it will read the temperature of the fluid coming out of the solar collectors and S2 is placed where it will read the temperature going in (See diagram).

**The controller compares the S1 temperature to the S2 temperature of the pipe coming out of the tank heat exchanger (which will be the same as the temperature of the fluid going into the collector). This logic is more accurate and compatible with proportional control. If there are more than one heat storage locations (as would be the case with solar systems with more than one use for the solar energy), the S2 or storage sensor is placed where the flow from the various heat exchangers join to return to the solar collectors.**

If S1 is greater than S2, the pump comes on and fluid circulation begins between the solar collectors and the tank heat exchanger. When the temperature difference is small, the variable speed pump runs slowly; when the temperature difference is greater the pump runs faster. The variable control feature has many benefits including improved low sun performance, less control cycling and conservation of electrical energy at the pump.







◀ The placement and insulation of the Temperature sensors is a very important. Performance can suffer by 20% or more if the sensors are not installed properly.

The S1 sensor (the solar collector sensor) is placed between the last two solar collectors in the array at the point where the warmed solar fluid is coming out of the collectors. With this placement, the sensor has a solar collector on either side of it and can read the collector temperature more accurately when the system is in the “off” condition.

**Over temperature protection** – The SH-08 controls over temperature in an improved manner. Whenever the temperature at S1 (coming out of the solar collectors) is greater than a selectable temperature (default is 250 degrees F), the heat dump is activated.

The solar heat dump is a small solenoid type valve that sends a small 1/4” stream of water down the drain. The effect is to slowly and gently cool down the entire solar energy system without consuming very much water. The volume of a typical heat dump is only about ten gallons and it tends to occur twice per day if the structure is not occupied and once per day or not at all if the building is occupied. Operation of the heat dump will not compromise a septic system because of its low volume and high temperature which facilitates bacterial action.



## POTABLE SIDE PLUMBING

The potable portion of the system consists of the solar storage tank, the 24v heat dump valve and the anti-scalding valve. The temperature of the water within the solar storage tank will be highly variable and might be very hot. **Do not send scalding water to faucets and other fixtures!!** The 120 gallon solar storage tank can range in temperature from 60° to 180°. Be sure to plan for expansion or contraction of the water in the tank. The preferred method is to allow for a small amount of back flow up the supply inlet. However, if a check valve or backflow preventer is installed, a substantial expansion tank is called for. Be sure to plumb the temperature and pressure relief valves to safe location. A weeping temperature and pressure relief valves can cause serious corrosion damage to the tank. The final 5 feet of cold water piping and ALL of the hot water piping must be insulated to at least R-2.6.

## INITIAL START UP

**Do not begin the start up unless you are sure that the system is free of leaks at 100 psi.**

Add the expansion tank and set for 10 psi.

The system is first flushed with fresh water to remove any dirt and acid remaining from the soldering work. Use two garden-type hoses, one with two female ends (a washing machine-type hose can be used).

Attach one hose with two female ends to a faucet at one end and to the “fill valve” of the system at the other end. Attach the other hose to the “drain valve” of the system and direct the other end outside.

**Cover at least half of the area of the solar panels to prevent dangerously high heat buildup. Only skilled solar heating technicians should work on solar heating systems during sunlight hours.**

Ideally, the system will be complete and operating on fresh water for a period of time before the antifreeze is added. Get all of the air out and let the system warm up. Flush the system a final time and then add a measured quantity of pure antifreeze solution such that the ending concentration will be 50% propylene glycol and 50% water. Use the SH-08 controller’s manual ON switch to circulate the fluid until most of the air is eliminated. The automatic air eliminator will continue to remove dissolved air for several hours. Note that the cap must be loosened in order for the air eliminator to perform its function. The system pressure may fall during this time. Automatic fill valves are to be avoided because a leak could dilute the antifreeze solution without being noticed and result in a freeze up during cold weather. When you are sure that all of the air is out, tighten the cap on the air eliminator.

Set the heat dump temperature at the controller.

**CAUTION: Do not operate the system permanently on 100% water solution. Under stagnation conditions the pressure relief valve will be activated and very hot water and/or steam may come out.**

## TROUBLESHOOTING

Here is a rundown of the most likely problems that can occur with the Radiantec Basic Solar Domestic Water Heater.

**Leaks** – This is a problem that should be prevented at the outset. Remove the expansion tank and the pressure relief valve to prevent damage. Plug the holes and then pressure test the system at 100 psi for 24 hours. Reinstall the expansion tank and pressure relief valve. Contact Radiantec if you have trouble obtaining a completely tight system.

**Stagnation** – This is a “no flow” situation where the temperatures at the solar panels are very hot (**caution!**) because the heat is not being taken away to the domestic heat exchanger. Determine why there is no flow. Some causes are:

- Electrical outage
- Pump failure
- Controller failure
- Loss of fluid due to leakage
- Air bounding of the system
- Pump failure

**Air Bounding** – A fluid leak will eventually cause air bounding because of expansion and contraction of the system fluid. The heat of the sun will pressurize the system because of expansion and cause leaking. When the sun goes down, the system depressurizes and air is sucked into the system. Repair the leak and recharge the system

**Noises** – If the pump makes noise, it is likely to be air bound or struggling to move a liquid against gravity. A loud banging is likely to be a stagnation condition. **The pump can get very hot.**

### No Domestic Hot Water –

- A combination of inclement weather and an inoperative backup electrical element. Open the access box at the solar storage tank and reset the red button. Replace element if needed.
- Continuous operation of the heat dump caused by very high temperatures in the solar panels. This is caused by stagnation of the solar panels. Remedy the stagnation situation.

**Overheating** – If either the solar fluid or the domestic hot water is getting too hot, adjust the temperature at which the heat dump is activated at the controller (the S1 relay).

**Sewage Odor** – If the heat dump is very rarely used and has its own dedicated trap to the sewer system, the trap could dry out. Add water to the trap.

## SYSTEM MAINTENANCE

All individual components of the system which may require periodic examination, adjustment, service and/or maintenance should be easily and safely accessible by the owner and in accordance with the codes in force at the installation site. Individual collectors in any array should be installed in such a way as to be replaceable or repairable without disturbing any other collector in the array.